

## LIGHTTELLS Corporation Limited

CA-700

Caffeine & CGA Analyzer



Coffee Analyzer

Download from ios /Android

### 1. Product Introduction

The CA-700 portable Coffee Caffeine/Chlorogenic Acid (CGA) Analyzer is an accurate instrument for measuring the caffeine and CGA of coffee with its advanced mobility, accuracy, easy-to-operate feature, you can get the Caffeine and CGA value displayed on your smart phone app within 1 minute.

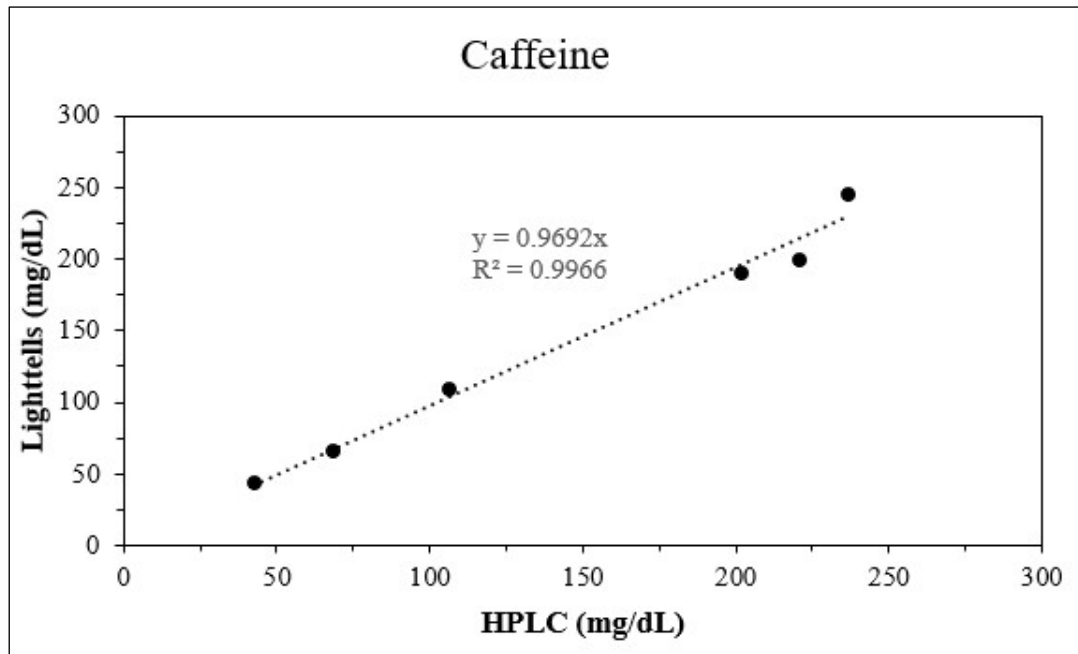
### 1-1. Package Contents

- CA-700 x 1
- USB converter x 1
- 5V Power Adapter x 1
- Test chip package x 10
  - Test Chip x 1
  - Reagent x 1
  - Dropper x 1 (for mixing reagent)
  - Quantitative dropper x 1 (for coffee)
- Pipette dropper x 1 (Option)
- User Manual with Limited Warranty Page x 1

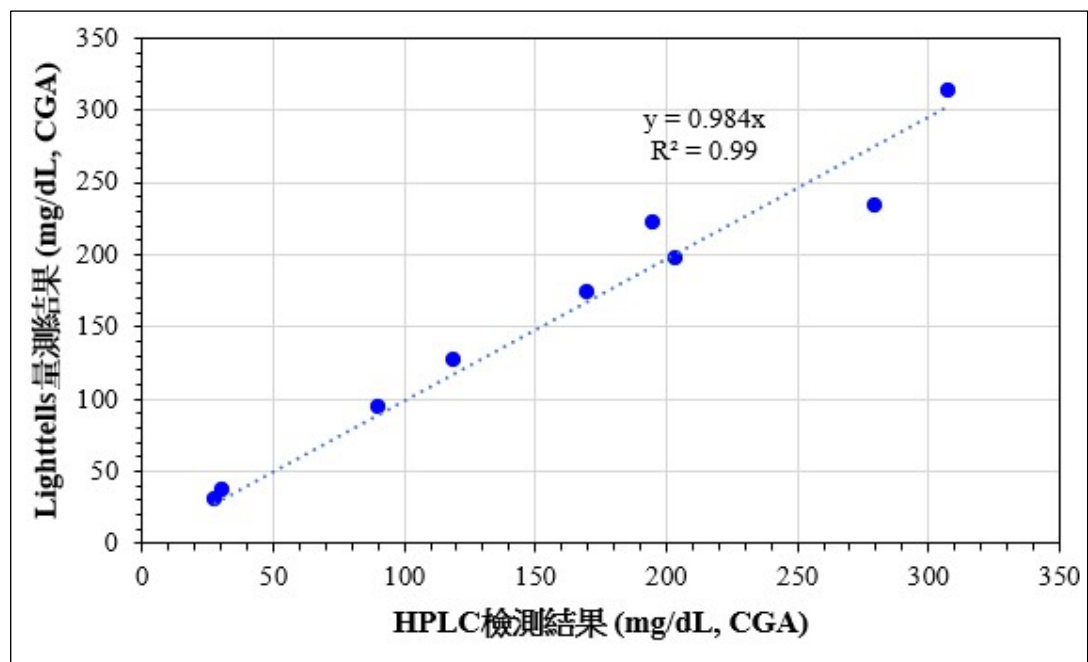
### 2. Product Specification

	Specification
Reading Range	Caffeine 10 – 500 mg/dL CGA 10 – 500 mg/dL
Sampling Size	0.1ml
Dropper tolerance	Pipette +/- 6% (25 degree C) Dropper +/- 12% (25 degree C)
Working Hour	2 – 3 continuous working hour per full charge
Weight	160g
Dimension	L: 200.0 mm W: 78.0 mm H: 30.5 mm
Power adapter	110 – 240V, 50/60 Hz
Charging input	5V, 0.5A, USB Type C

### 3. Accuracy Comparison Results by the Laboratory



#### Chlorogenic Acid



#### **4. Classification of hazardous substances and preventive measures WARNING**

**Substance:** Coffee detection reaction solution

**Hazardous ingredients:** Sulfuric acid, oxalic acid, citric acid

**Hazard warning message:** Warning

**Health hazard:** Corrosive/irritating skin substances

**Hazard prevention:**

Please operate the product in a well-ventilated place. It is strictly forbidden to eat or drink during the process, if it comes in contact with the skin or eyes, Please rinse with plenty of water, if you feel uncomfortable or irritating, please seek medical attention as soon as possible.